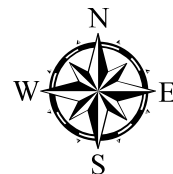


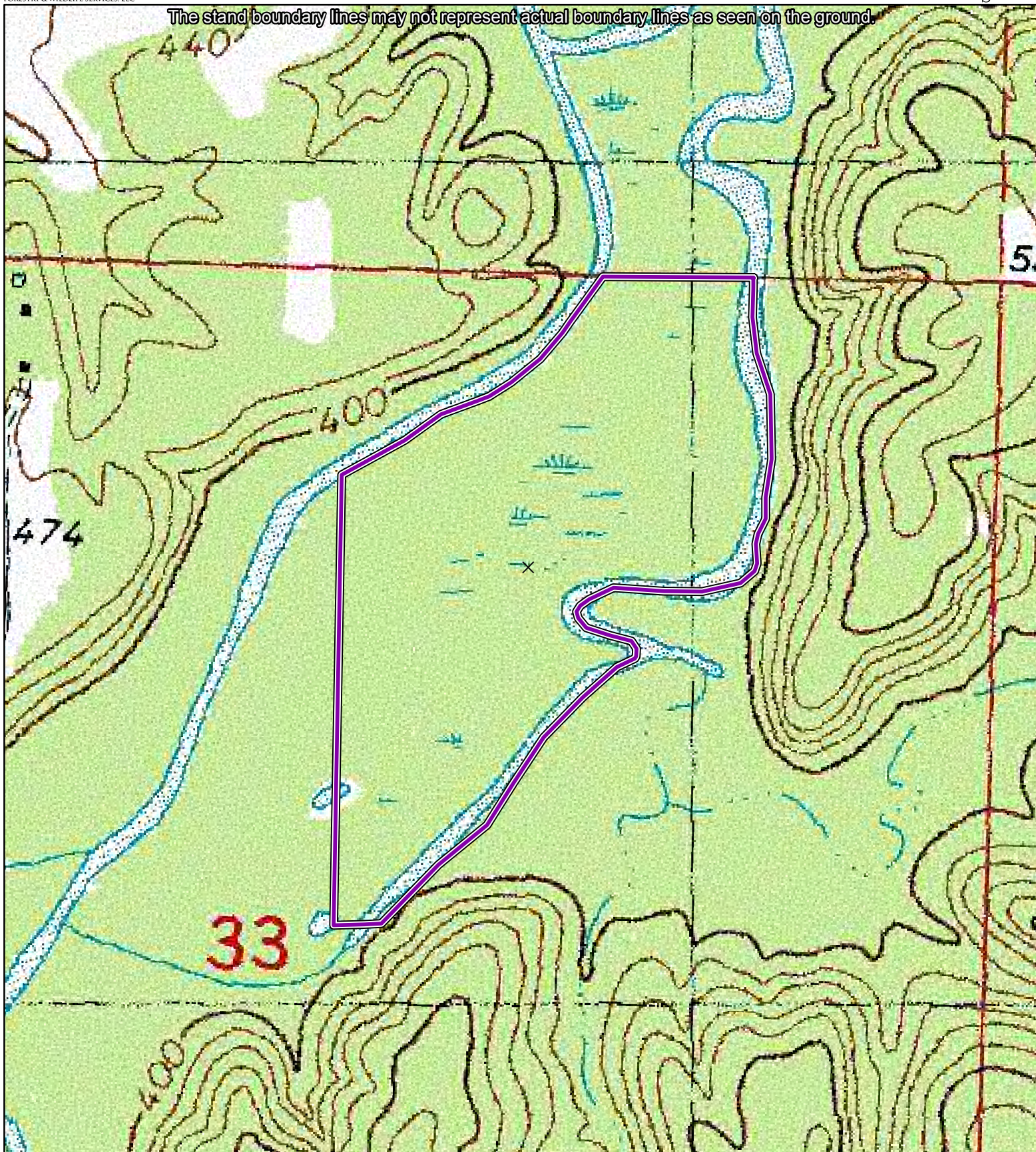


Stewart Tract

± 47.5 Acres in Section 33 of T1S & R5E of
Alcorn County, Mississippi



The stand boundary lines may not represent actual boundary lines as seen on the ground.



Coordinate System: NAD 1983 UTM Zone 16N
Projection: Transverse Mercator
Center Coordinates: 34.9570 -88.7765
Date: 1/6/2020

1 in = 500 ft
0 250 500 750 1,000

 Tract