

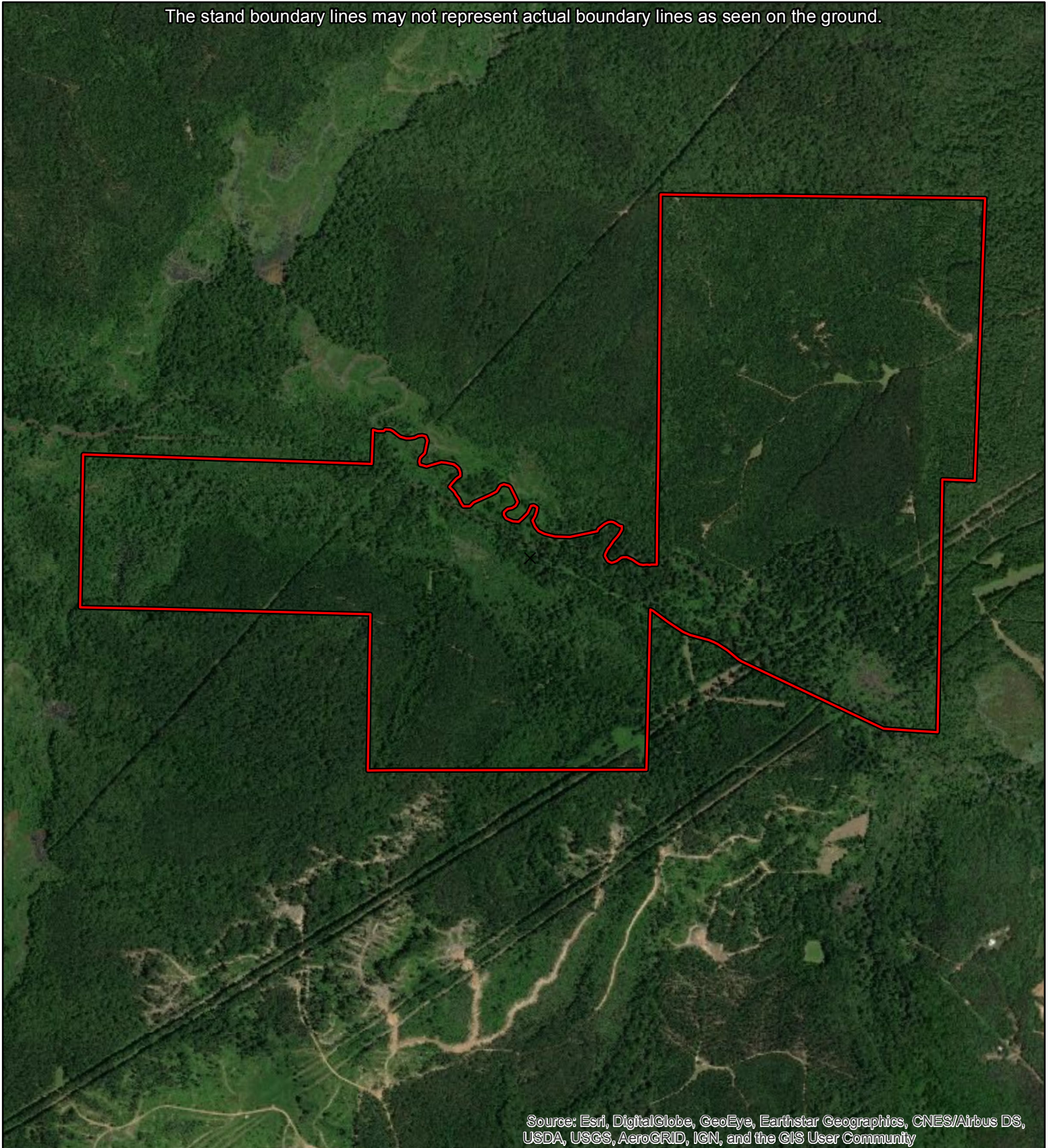


McKenzie Tract

± 521 Acres in Sections 17, 18, 19, and 20 of T2S & R2E
Benton County, Mississippi



The stand boundary lines may not represent actual boundary lines as seen on the ground.



Source: Esri, DigitalGlobe, GeoEye, Earthstar Geographics, CNES/Airbus DS, USDA, USGS, AeroGRID, IGN, and the GIS User Community

Coordinate System: NAD 1983 UTM Zone 16N
Projection: Transverse Mercator
Center Coordinates: -89.1273 34.9005
Date: 3/6/2019

1 in = 1,200 ft

